

MLT 1035

AGRICULTURAL HANDLING solution



 **MANITOU**

A PASSION FOR FARMING



As partners to the farming industry for more than 20 years, we know your business is **demanding**, and on today's modern farm the materials handling plays an important part in the daily farm handling jobs, so you can be sure you'll be able to find within our farming range **THE** Manitou you need.

The MLT 1035 rough terrain telehandler is the ideal choice for **performance**. Its impressive capabilities enable you to carry out all of your **farm handling**

tasks: straw and hay handling, harvesting work, bulk loading and unloading, animal feed, etc. Arable farmers and agricultural contractors, will appreciate the qualities of this machine. More than just a handling solution, Manitou offers you a product which both looks good and is comfortable to use: inside and outside have been cleverly designed to satisfy you. The MLT 1035 benefits from innovations such as: JSM*, Evolution cab, ECS**, etc. In short, you gain both in **comfort** and **productivity**.

When you choose Manitou, you can count on a fork lift truck for long term durability. You also benefit from the package of services provided by your dealer: after-sales service, servicing and maintenance contracts, on-site repairs and financing solutions, etc.

Why all this? Because, like you, we take pleasure in a **job well done!**



* Joystick Switch and Move: patent applied for by Manitou BF
** Easy Connect System: hydraulic decompression of the accessory line

“A real agricultural handling **solution**”



PERFORMANCE ON YOUR FARM

3500 kg:

The MLT 1035's maximum capacity allows you to move up to 3.5 tonnes.

9.60 m:

The boom of the MLT 1035 lets you carry loads up to 9.60 m in height.

2 T and 2.75 m:

A 2-tonne capacity and 2.75 m-height range equate to 6 bales of straw or hay...

Exceptional capacity

The MLT 1035 has been designed to meet your most demanding handling requirements. With a capacity of 2 tonnes and an offset of 2.75 m at maximum height, its impressive boom performance allows you to position loads up to a height of 9.60 m.



Style and design

Because you appreciate machines that look good, the design of the MLT 1035 has been carefully worked on. Its style is distinguished by pure lines and fluid shapes...The pleasure starts as soon as you look at it.

Goes anywhere

Agricultural profile tyres, high ground clearance (44 cm), frame levelling and powerful traction force which will get you out of any situation. The MLT 1035 has been designed to push back the limits of your operation.



YOU FEEL GOOD...



Farming has changed a lot, handling as well.

The interior of the MLT leaves nothing to be desired with its superb bodywork. The driving position has been **ergonomically designed** for maximum comfort. It is fitted with a cloth seat and the fully adjustable steering column can be adapted to suit. Ventilation outlets, sun visor, roof screen, etc. all help to provide you with a comfortable working environment.

Exclusive to Manitou, **JSM** lets you control all movements with one hand safely and effortlessly: raising and lowering the boom, crowding and tilting, auxiliary service for operating attachments and also forward/reverse direction of travel. You always keep one hand on the steering wheel to maintain full control of your MLT.

Low noise levels are achieved through the full **soundproofing** of the cab (only 78 dB) and the insulation of the engine compartment.

The dashboard has an analogue display which gives all the information you need during your working day: hour meter, speed, oil temperature, fuel level, etc.

For still more comfort, the Evolution cab gives you all the space you need to feel comfortable throughout the working day.



“...but you have to **go home in the end!**”



“Adapting
to your requirements”

EACH TO THEIR OWN **STYLE**

Reacting to customer choice is a Manitou principle. That's the reason you **can choose between** 3 levels of finish: **Classic**, **Premium** and **Elite**.



CLASSIC

Because all your requirements are important, Manitou provides you with complete peace of mind in all versions of the MLT 1035.

In the **Classic** version, your comfort is increased by:

- Mechanical cloth seat
- Rear-view mirror
- Radio player

PREMIUM

You are not just opting for a Manitou, but for **your** Manitou...

The **Premium** finish is differentiated by a number of practical and innovative items:

- Pneumatic cloth seat
- CD/MP3 car radio
- Air conditioning
- Rear-view mirror
- Easy Connect System

ELITE

The **Elite** version offers a top specification model:

- Pneumatic cloth seat with active suspension
- Fan with reversible blades, Autoclean System
- Bluetooth car radio
- Air conditioning
- Boom suspension
- Rear-view mirror
- Easy Connect System
- Self-cleaning pre-filter

DESIGNED TO OPTIMISE POWER AND FUEL EFFICIENCY

Each telehandler must have a **suitable power unit** to give you the best engine/machine torque: too little power and you lose efficiency, too much power could increase consumption to no effect.

The **Perkins** 4-cylinder, **4.4 l** Turbo **101 HP** (74.5 kW) is an example of an engine which goes well with the MLT 1035. Its perfectly adapted power/weight ratio gives you exceptional performance through the **torque converter** transmission.



All the major components of your machine (power unit, transmission, axles and tyres) are combined in such a way as to optimise the power produced by your engine.

Whether operating or travelling, the flexible and extremely precise **4-speed mechanical gearbox** allows you to travel at speeds up to 35 kph*.

* Speed varies according to national legislation.

“**Optimising**
the power of
your **engine**”

101 HP:

The 101 HP of your MLT 1035 gives you efficient daily fuel consumption thanks to its ideal power/weight ratio.

4 gears:

Flexibility and precision are the watchwords with the 4-speed mechanical gearbox which allows gear changing under load.

“Work quickly and effectively”



YOU WILL HAVE TIME TO SPARE

Save yourself time to concentrate on what matters - that's Manitou's philosophy when it comes to handling: fast working cycles and driver comfort are good examples.

For maximum efficiency, Manitou offers you a machine which is simple to use. **Quick and easy to learn** (JSM, controls perfectly placed), your machine is the solution to all your farm handling duties.

Performance is essential! With your MLT 1035, you will be able to do even more work: the more time you spend at the wheel the more your efficiency will be increased.

The variable flow hydraulic pump, **110 l/270 bar**, with the **LSU system** (Load Sensing Ultra), lets you build up movements to work faster.

A wide range of **attachments** are available, ideally suited to your Manitou to increase utilisation and versatility. Whatever the job, Manitou can provide a solution to maximise your farm handling requirements with complete safety. Collector brush, bale clamp, multifunction grab bucket, boom, silo unloader bucket, etc. Manitou supports you in all your applications.



Handling cycle time unladen

Movement	Time
LIFTING	7.00 sec
LOWERING	5.20 sec
SIMULTANEOUS EXTENSION OF 1 ST AND 2 ND TELESCOPE	15.70 sec
SIMULTANEOUS RETRACTION OF 1 ST AND 2 ND TELESCOPE	10.60 sec
DUMP	2.70 sec
CROWD	3.00 sec

110 l/min:

Your MLT's variable flow rate hydraulic pump together with JSM gives you a maximum flow of 110 l/min.

4 x 4 x 4:

4 wheel drive and 4 wheel steer = manoeuvrability for getting out of all situations.

YOU ARE SAFE

SORRY, WE DON'T DESIGN TOYS

Our **design department**, employing more than 200 engineers and technicians, have specialised in the design of agricultural telehandlers **for more than 20 years**. With more than 50 registered patents, our knowledge and expertise with regard to the structure of the machine offers you reliability and durability. A fully comprehensive testing procedure and "best practice" methods are applied to ensure quality manufacturing at all levels, utilising all the latest modern technology.

Specialists in agriculture, Manitou develop their product range with the customer in mind, selecting components to suit the most arduous farm handling needs, **your machine like the Manitou company is 100% dedicated to agriculture**: the tyres, transmission and even the cooling system have been logically chosen and assembled.



“A machine 100% dedicated to agricultural use”

“The assurance of working in total safety”



YOU ARE PROTECTED

Your working environment must above all be a safe area.

The excellent **stability** of the MLT 1035 combined with the aggravating movement arrestor allow you to handle loads up to **3.5 tonnes** with complete confidence.

Your **safety** is further reinforced by the **presence detector** located in the seat. Travel movements are only allowed when you are sitting in the driving seat.

The cab has been especially designed to protect you. Satisfying **ROPS/FOPS* requirements**, withstanding rolling over, heavy objects falling and therefore prevents distortion to the cab.

A large window area, lateral engine, low boom pivot as well as the high seating position gives you **360° visibility** guaranteeing both your own safety and that of everyone around you.

* ROPS: rollover protection structure
FOPS: falling objects protection structure

SEE FURTHER

OFFERING YOU **MADE-TO-MEASURE SERVICES**

The close proximity of a network of experts at your service.

Your local Manitou dealer is dedicated to providing a first class after sales back up. The know-how, experience and commitment of Manitou, at more than 500 dealers throughout the world, ensure you will have professional support on a daily basis.

Maintenance and after-sales service: so that your telehandler is operational all year round, your dealer can offer you maintenance contracts. You will reduce your usage costs and have the guarantee of your equipment being regularly monitored. Manitou is committed to maintaining your productivity on a daily basis.

Leasing and finance agreements: your Manitou dealer is your best partner. For financial solutions, we help provide you with specific finance and modular packages to support you as your business develops.

- **COMFORT SERVICE:** a maintenance contract comprising consumables, labour and travel for maximum peace of mind.
- **MANIPLUS:** a contract which extends the manufacturer's guarantee by 24 to 36 months.



“Accompanying
the changes in
your business”



REDUCE YOUR ECOLOGICAL FOOTPRINT

From the design stage of your machine, Manitou does everything to **respect the environment**.

Our Ancenis production site, certified **ISO 14001***, guarantees that environmental standards are included from the design stage of the product up to the delivery of the machine to your business. Daily routine procedures include the selection of the least polluting components, selective sorting, treatment of special wastes and quite simply daily vigilance (energy, paper savings, etc.).

The optimum management of the engine speed according to the power demanded **minimises your consumption** and your polluting emissions, thus reducing the impact of the use of your MLT on the environment.

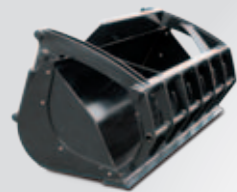
* ISO 14001: international environmental management standard which lays down requirements relating to the implementation of an environment management system.

YOU CHOOSE

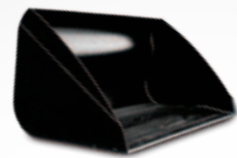
Standard and optional equipment	CLASSIC	PREMIUM	ELITE
Fork carriage	●	●	●
Straw deflector	●	●	●
Rear-view mirror	●	●	●
Radio player	●	-	-
CD/MP3 car radio	○	●	-
Bluetooth car radio	○	○	●
Mechanical cloth seat	●	-	-
Pneumatic cloth seat	○	●	-
Pneumatic cloth seat with active suspension	○	○	●
Air conditioning	○	●	●
Easy Connect System	○	●	●
Boom suspension	○	○	●
Fan with reversible blades, Autoclean System	○	○	●
Self-cleaning pre-filter	○	○	●
Hydraulic locking (accessories)	○	○	○
TURBO II pre-filter	○	○	○
Reversing warning buzzer	○	○	○
Internal rear-view mirror	○	○	○

● Standard ○ Option - Not available

A selection of attachments available:



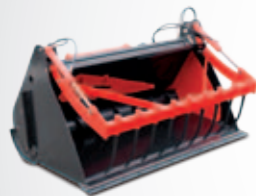
Multifunction grab bucket



Grain bucket



Collector brush



Silo unloader-distributor bucket



HP self washer

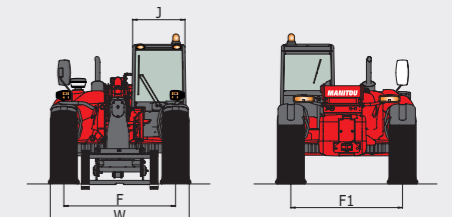
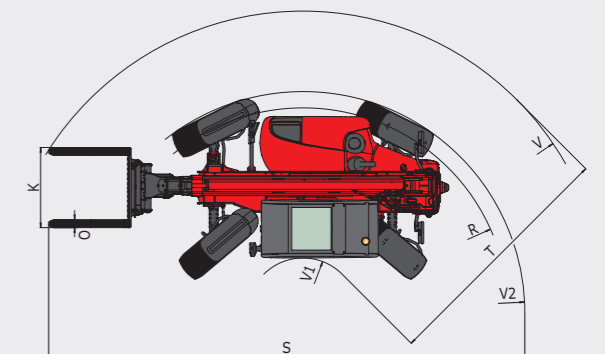
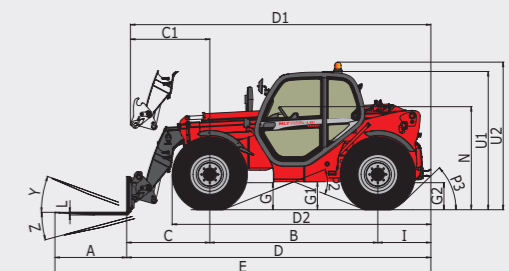
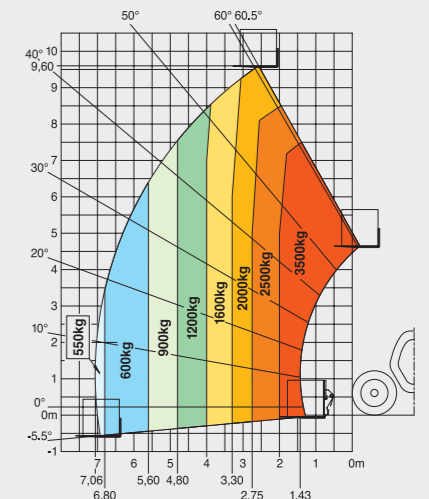
MLT1035

		MLT 1035 L TLSU
	Lifting capacity at 500 mm from fork heels	3500 kg
	Break-out force	6000 daN
	Lifting height	9.60 m
	Time: laden/unladen (in sec)	
	Lifting	7.00/7.30
	Lowering	5.20/5.30
	Extension	15.70/15.80
	Retraction	10.60/11.50
	Dump	2.70
	Tyres	460/70 R24
	Forks (mm)	
Length x width x thickness		1200 x 125 x 45
Carriage rotation		127°
	Braking	multiple-disk brake with oil bath on front and rear axles
	PERKINS STAGE III A engine	1104D-44TA
Cubic capacity		Turbo 4 cyl./4400 cm ³
Power at 2200 rpm (ISO/TR 14396)		101 HP/74.5 kW
Max. torque at 1400 rpm (ISO/TR 14396)		410 Nm
Injection		direct
Cooling		water
	Transmission	torque converter
	Number of gears (forward/reverse)	4/4
	Max. travel speed	35 kph*
	Hydraulics	
	Piston pump	110 l/min - 270 bar
	Capacities	
	Hydraulic oil	135 l
	Fuel	120 l
	Unladen weight (with forks)	8375 kg
	Width overall	2.40 m
	Height overall	2.30 m
	Length overall	5.09 m
	Turning radius (outer wheels)	3.92 m
	Ground clearance	0.44 m
	Drawbar pull	9380 daN

mm					
A	1200	G	450	R	3685
B	2810	G1	435	S	7921.4
C	1393	G2	435	T	3680
C1	1325	I	890	U1	2295
D	5092.9	J	980	U2	2545
D1	5025	K	1260	V	5000
D2	4267	L	45	V1	1310
E	6292.9	N	1715	V2	3918.5
F	1935	O	125	W	2402
F1	1935	P2	38°	Y	8°
		P3	45°	Z	119°

Maximum height reach: 2.75 m

As per standard EN 1459 annex B



*May vary according to applicable regulations

FT009EN_A_1210_MLT1035.indd



Your nearest **MANITOU** dealer:



 **MANITOU**

Head office:

B.P. 249 - 430 rue de l'Aubinière - 44158 Ancenis Cedex - France

Tel: 00 33 (0)2 40 09 10 11 - Fax: 00 33 (0)2 40 09 10 97

www.manitou.com

CE This brochure describes versions and configuration options for Manitou products which may be fitted with different equipment. The equipment described in this brochure may be standard, optional or not available depending on version. Manitou reserves the right to change the specifications shown and described at any time and without prior warning. The manufacturer is not liable for the specifications given. For more information, contact your Manitou dealer. Non-contractual document. Product descriptions may differ from actual products. List of specifications is not comprehensive. The logos and visual identity of the company are the property of Manitou and may not be used without authorisation. All rights reserved. The photos and diagrams contained in this brochure are provided for information only.

MANITOU BF SA - Limited company with board of directors - Share capital: 37,567,540 euros - 857 802 508 RCS Nantes